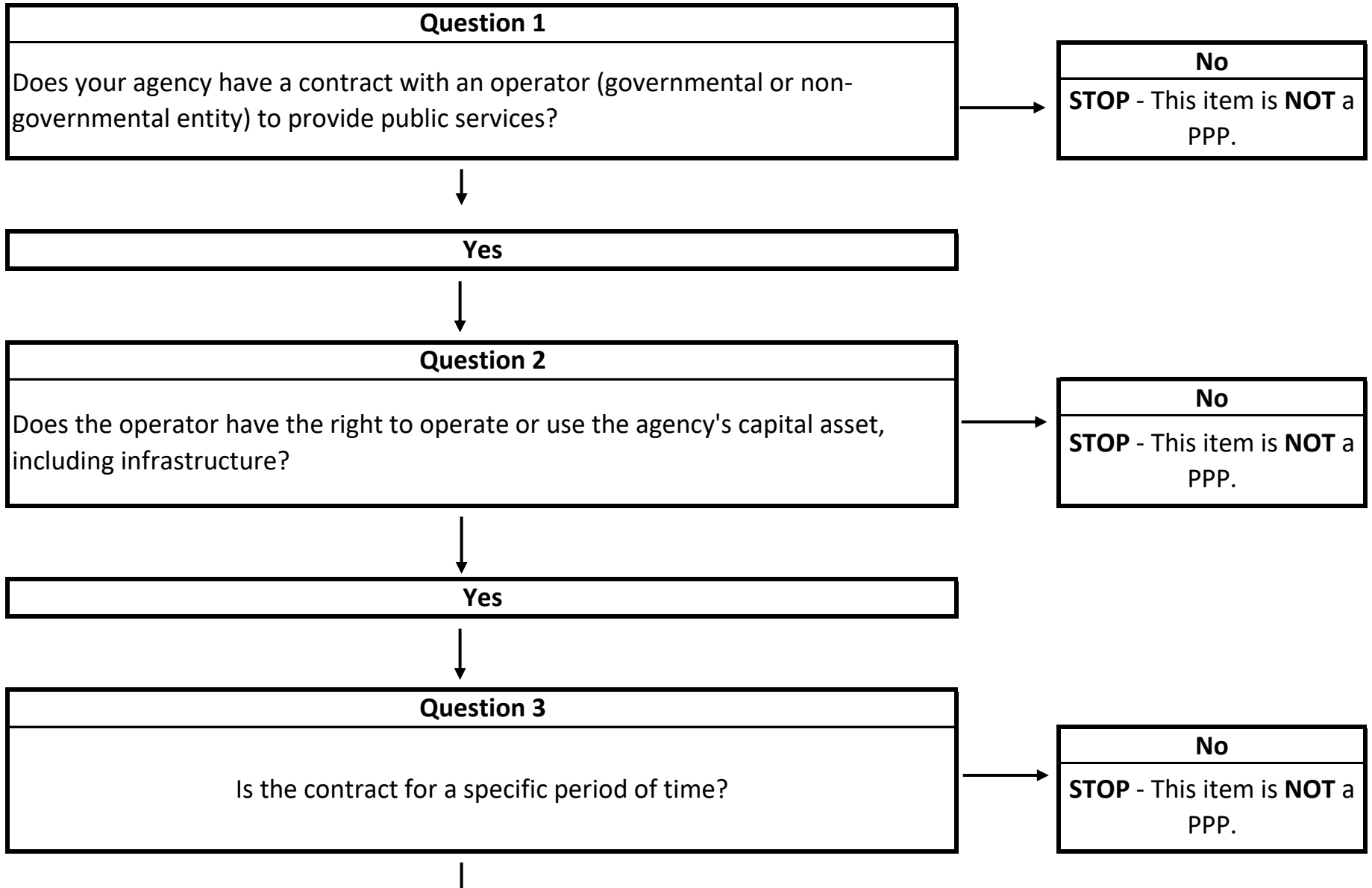
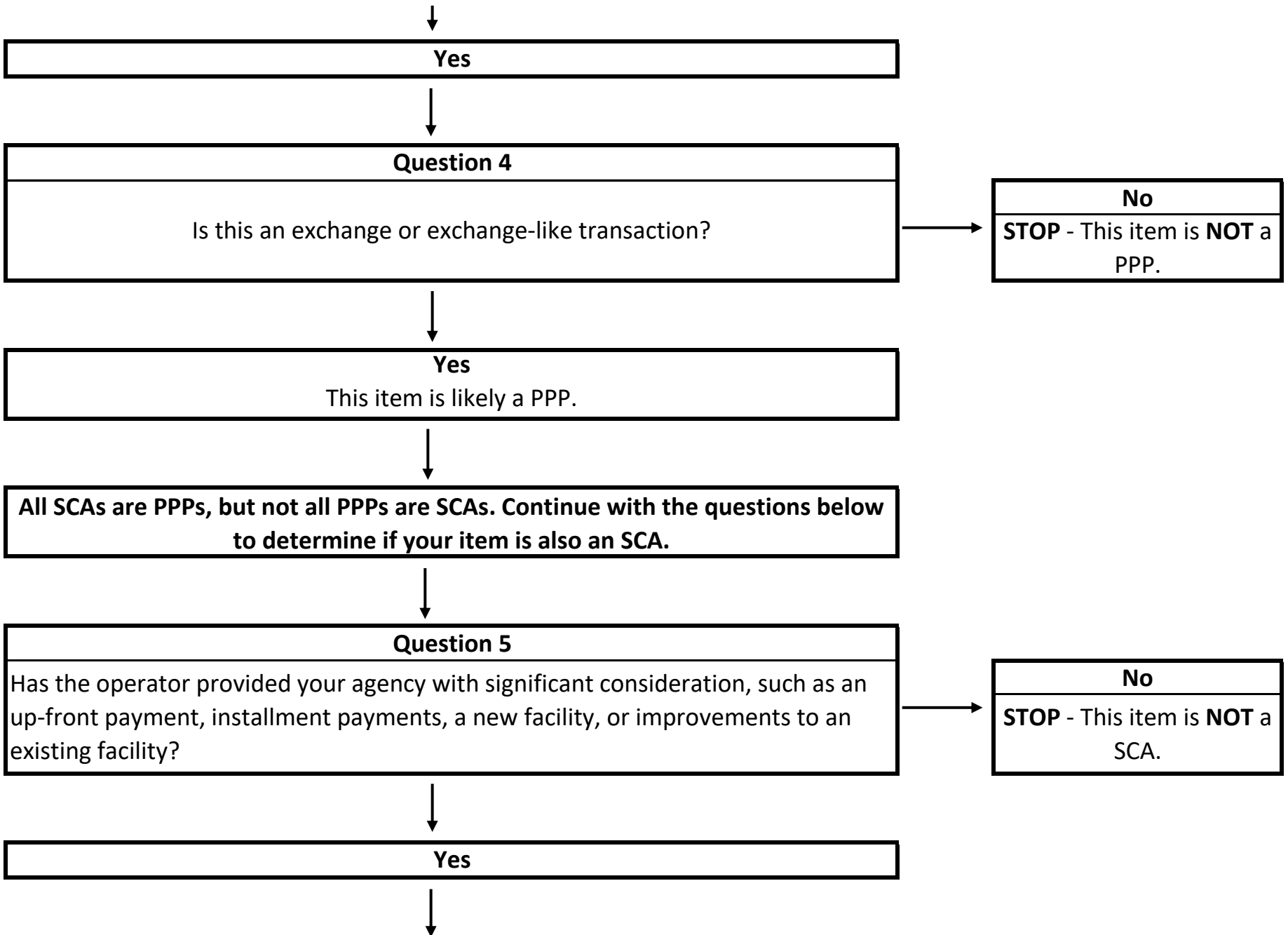


Is this a PPP or SCA?





Yes



Question 4
Is this an exchange or exchange-like transaction?



No
STOP - This item is NOT a PPP.



Yes
This item is likely a PPP.



All SCAs are PPPs, but not all PPPs are SCAs. Continue with the questions below to determine if your item is also an SCA.



Question 5
Has the operator provided your agency with significant consideration, such as an up-front payment, installment payments, a new facility, or improvements to an existing facility?

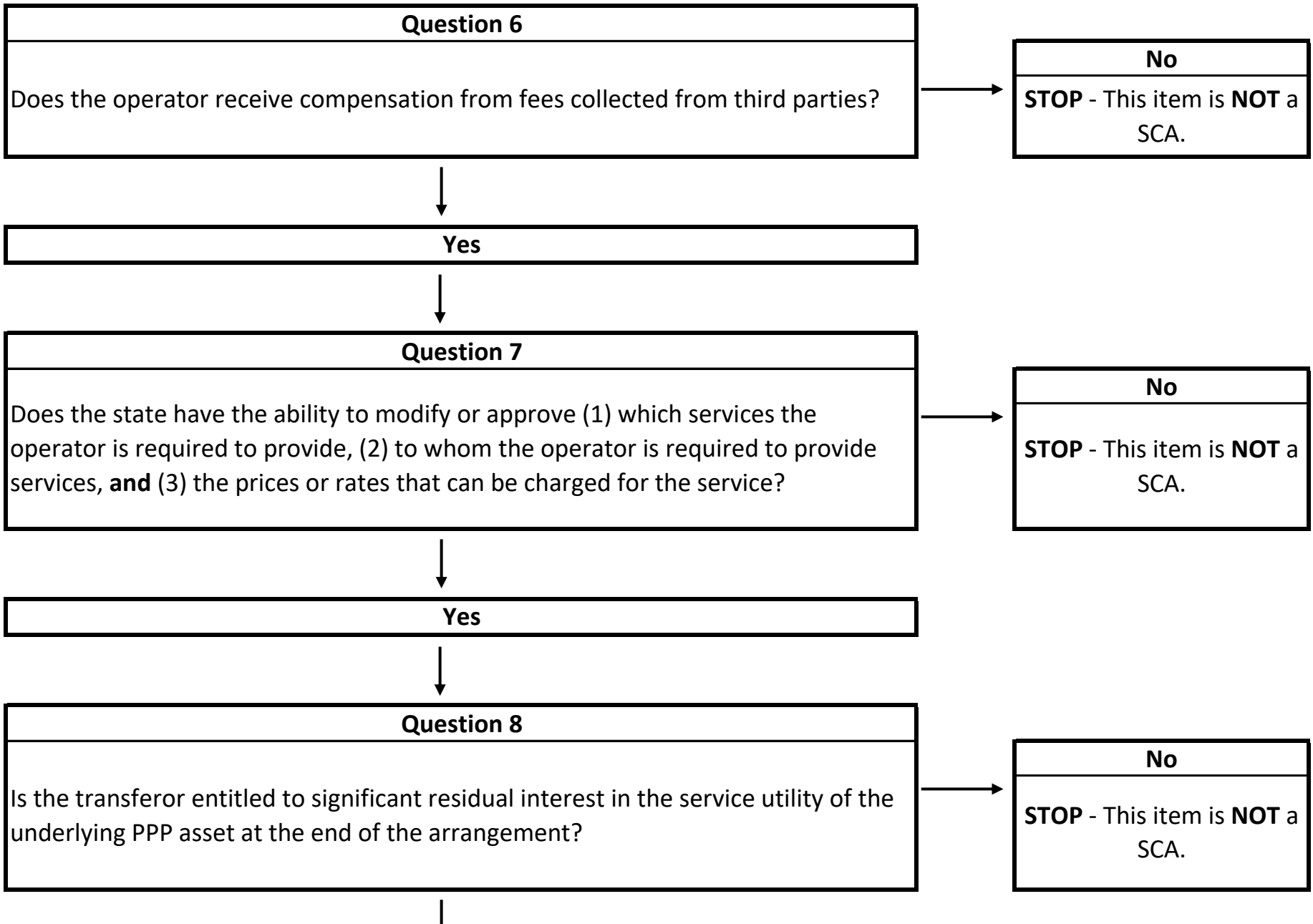


No
STOP - This item is NOT a SCA.



Yes







Yes

This item is likely a SCA.