

FloridaPALM

Planning, Accounting, and Ledger Management



BUSINESS PROCESS MODEL REVIEW

SEGMENT III



Business Process Model Review

Agenda

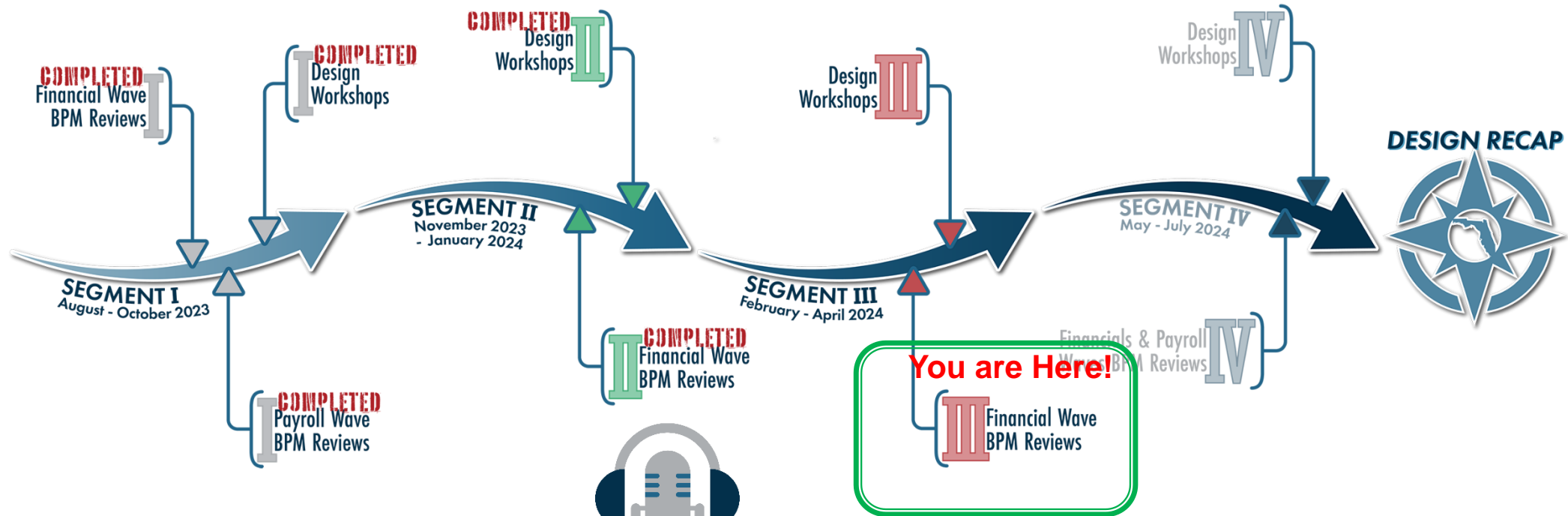
- ▶ Welcome and Introductions
 - Housekeeping
- ▶ Design Phase Overview
- ▶ Process Groupings Overview
- ▶ Business Process Model Updates
 - 10.3 Analyze and Reconcile Accounts
- ▶ Wrap Up



Design Phase Overview

Florida PALM Design Phase

Click a meeting icon to access details and materials including business process narratives & flows.



For more information, listen to [Episode #11: The Design Phase](#)



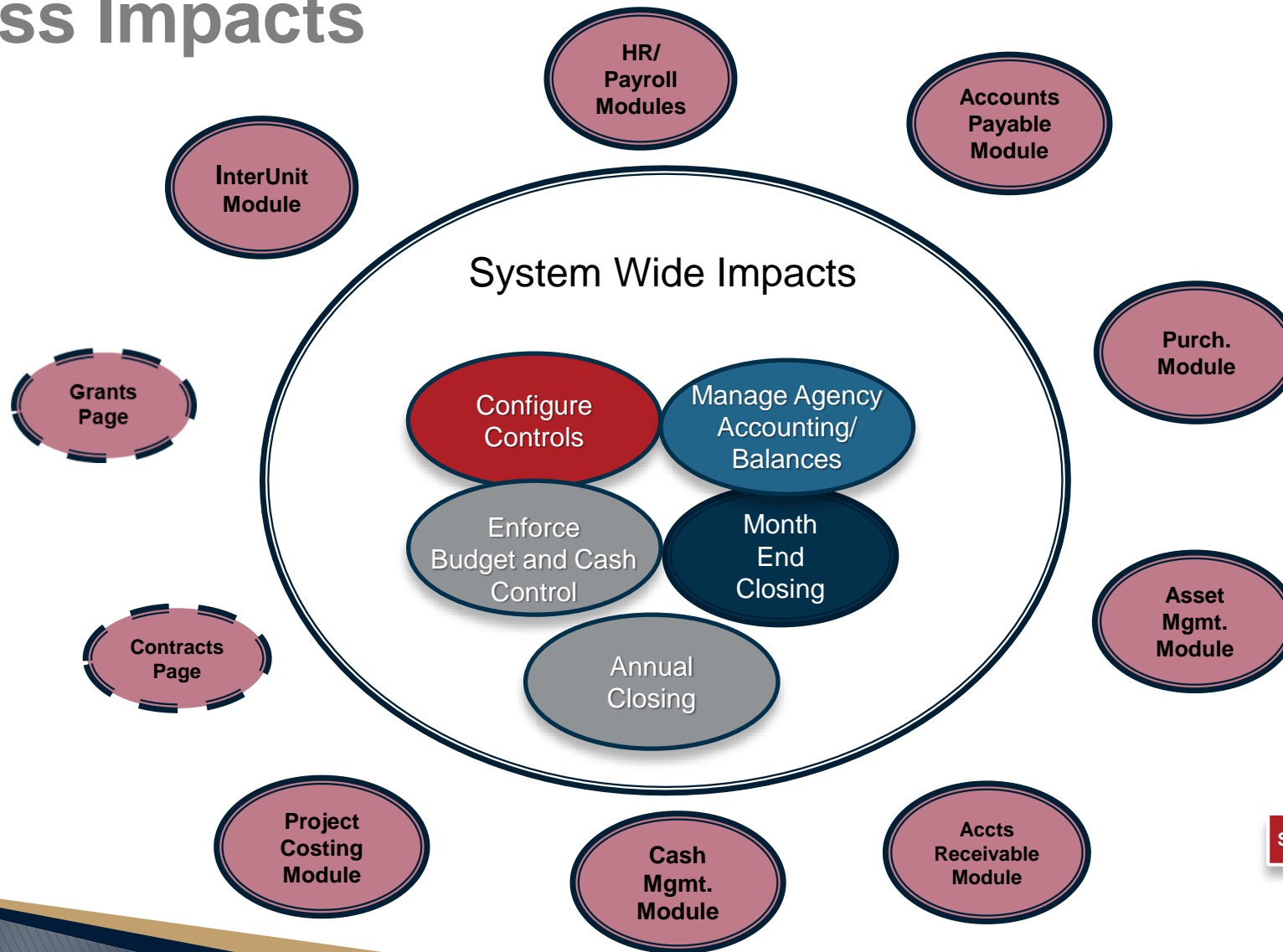
PROCESS GROUPINGS OVERVIEW

ACCOUNT MANAGEMENT AND FINANCIAL REPORTING
& BUDGET MANAGEMENT AND CASH CONTROL



Process Groupings Overview

Process Impacts

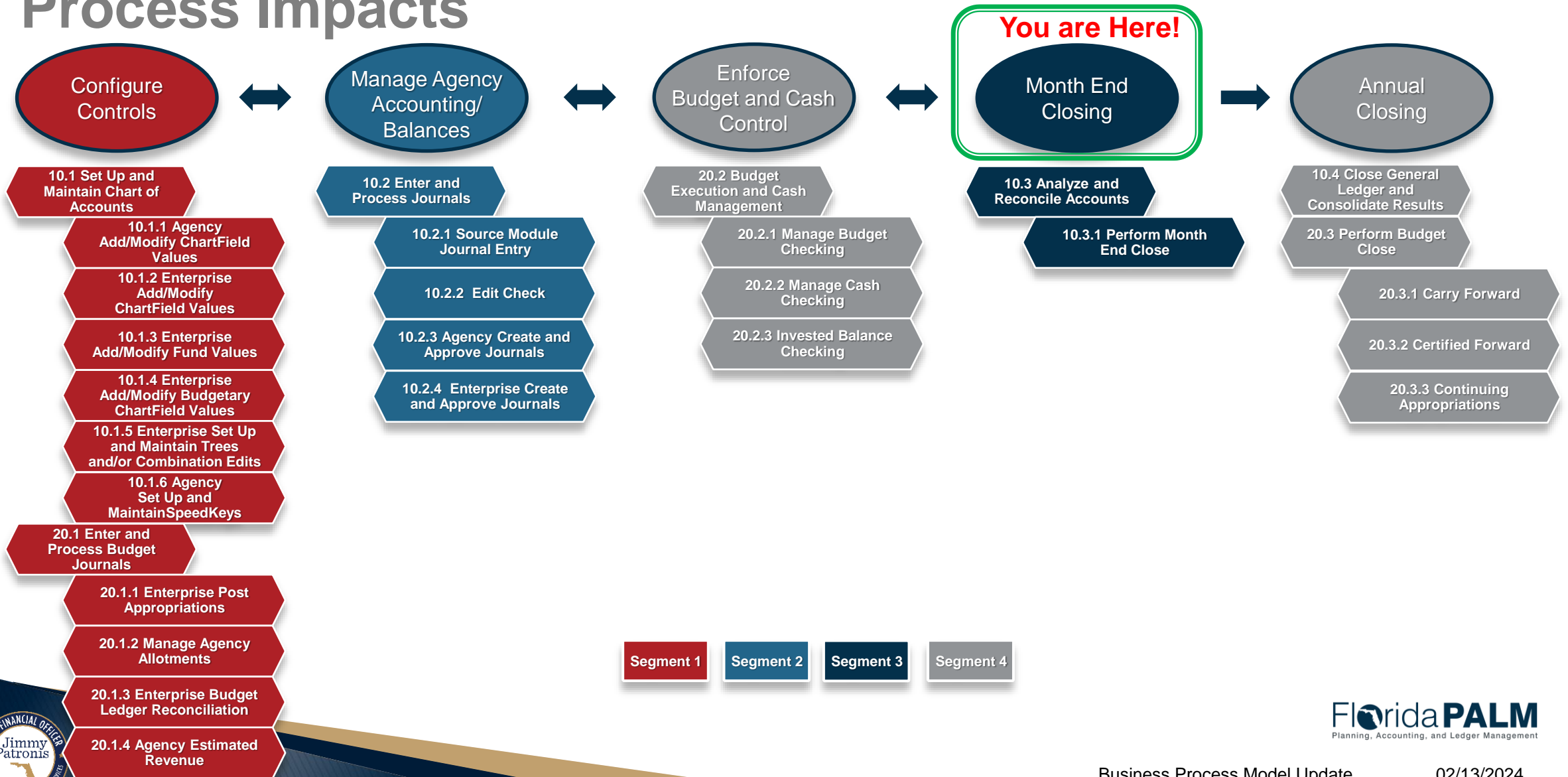


- Segment 1
- Segment 2
- Segment 3
- Segment 4



Process Groupings Overview

Process Impacts



BUSINESS PROCESS MODEL UPDATES

10.3 ANALYZE AND RECONCILE ACCOUNTS



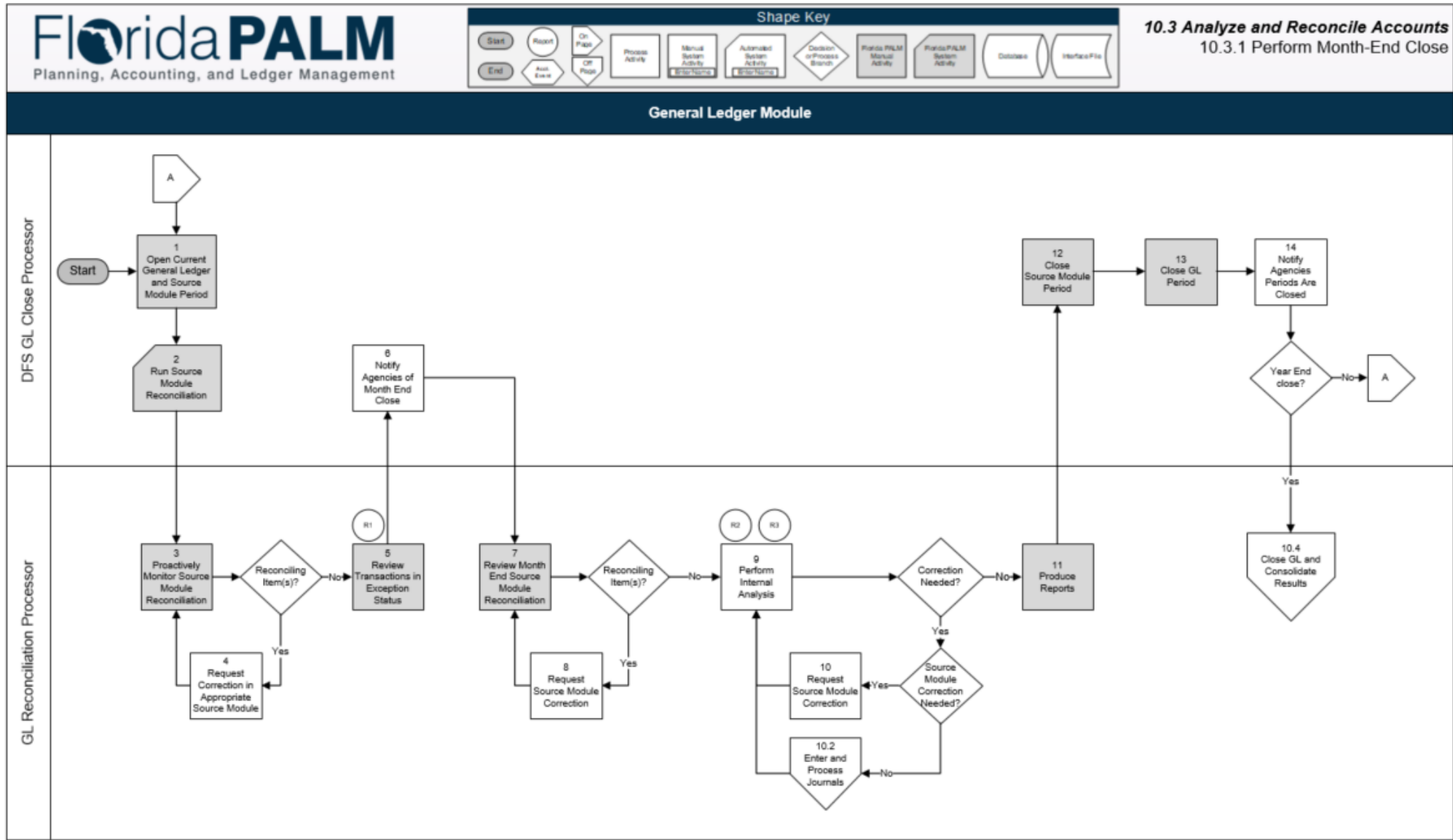
Business Process Model Updates

10.3.1 Perform Month End Close

- ▶ Summary of Changes:
 - Removed sub process for Allocations
 - Removed specific references to Projects/Grants
 - Added the automated reconciliation tool
 - GL Reconciliation Processor role includes both agency and enterprise users
 - Added Appendix to narrative to highlight accounting dates across modules

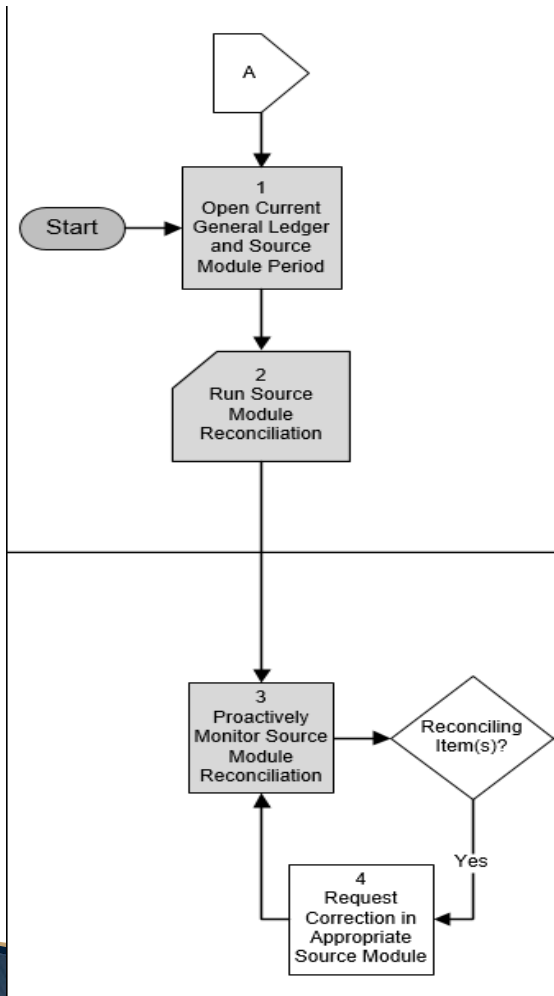


Business Process Model Updates



Business Process Model Updates

10.3.1 Perform Month End Close

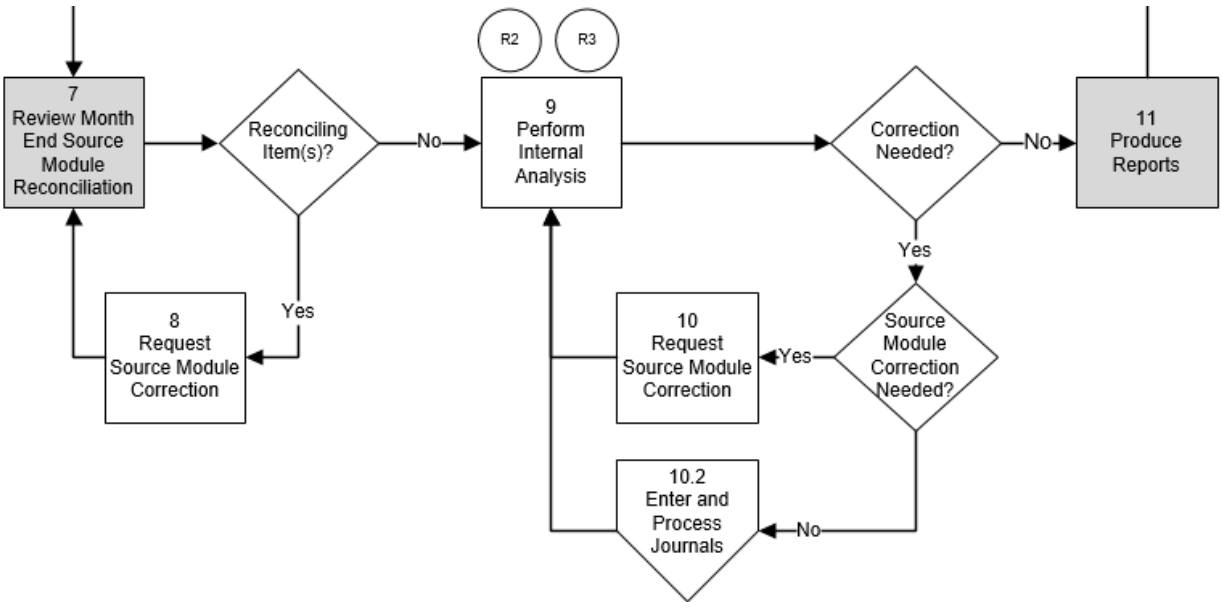


- ▶ Automated Reconciliation Tool
 - Source Module to General Ledger Reconciliation
 - Available on an on-going basis
 - Simplifies identifying reconciling items
 - Supports timely monitoring

Business Process Model Updates

10.3.1 Perform Month End Close

- ▶ Source Module Correction



Business Process Model Updates

10.3.1 Perform Month End Close

- ▶ Pending
 - Timeline for monthly close of the source modules
 - Timeline for monthly close of the General Ledger



CONTACT INFORMATION

CONTACT US

FLORIDAPALM@MYFLORIDACFO.COM

PROJECT WEBSITE

WWW.MYFLORIDACFO.COM/FLORIDAPALM/

