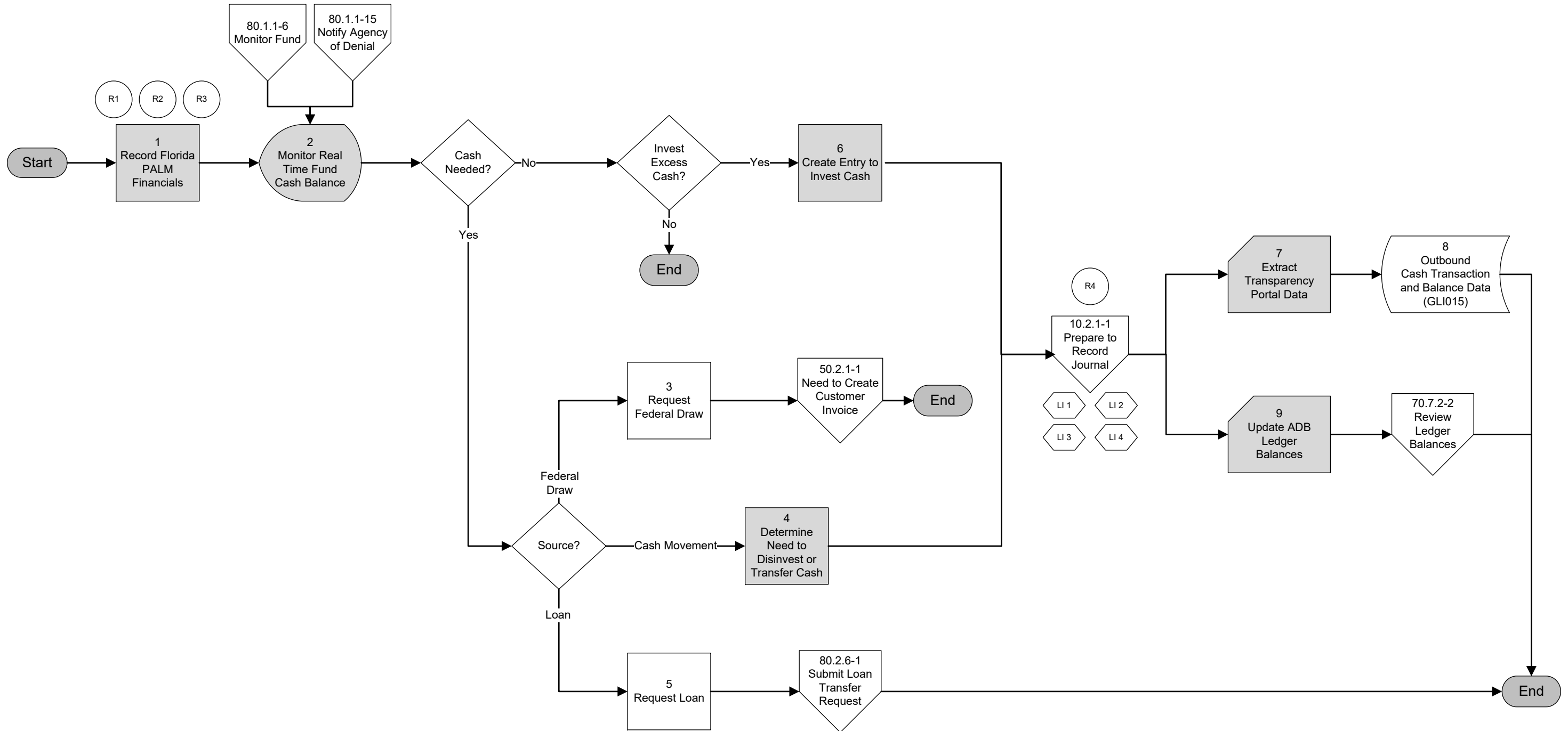
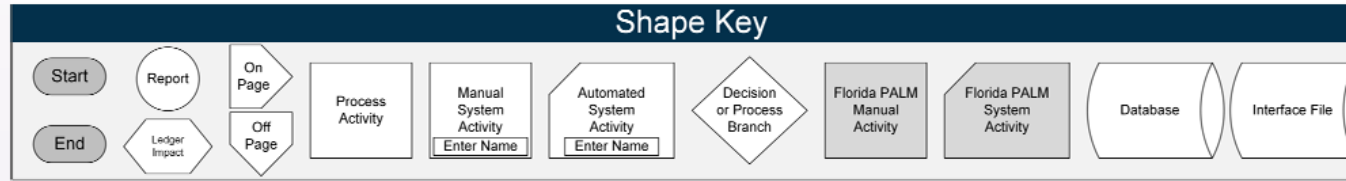


General Ledger Module

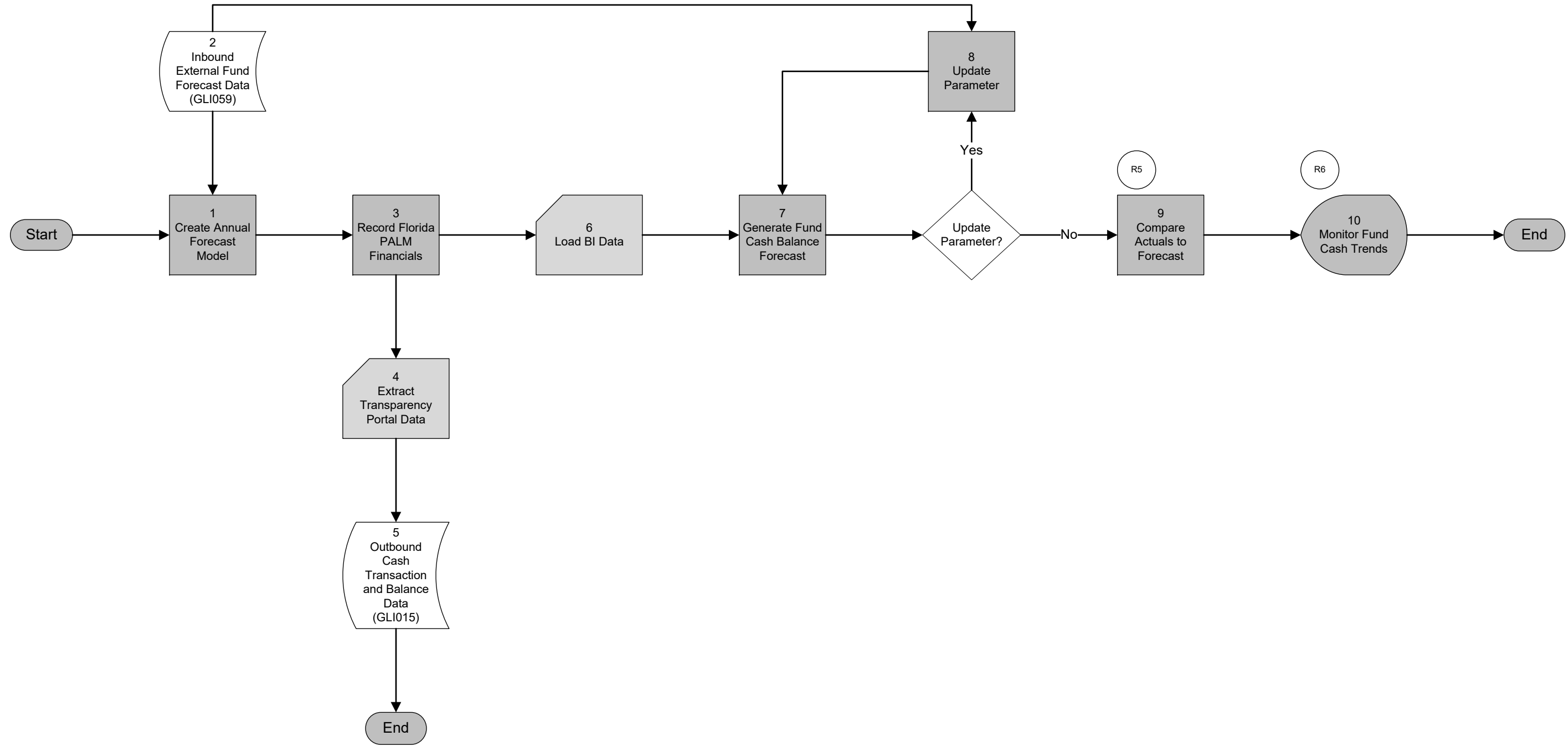
Agency GL Cash Processor

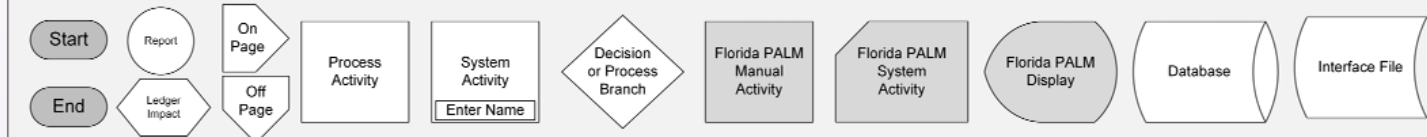




General Ledger Module

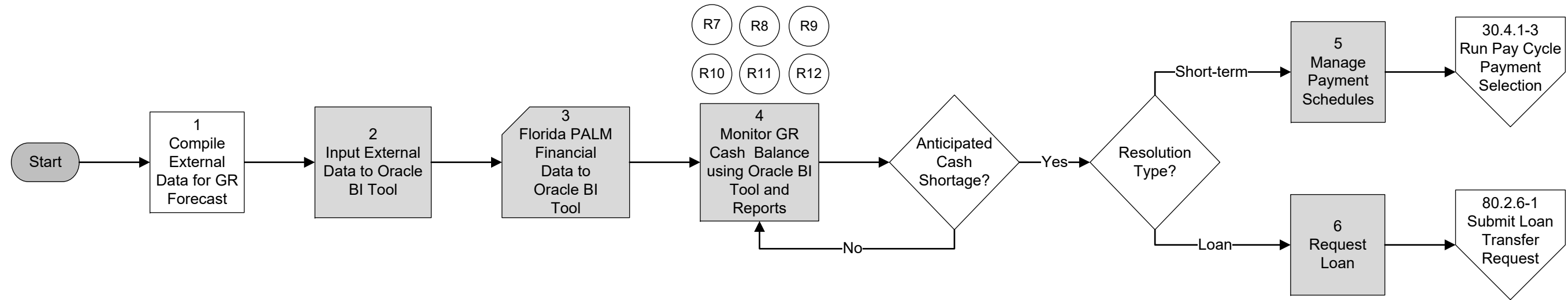
Agency GL Cash Processor

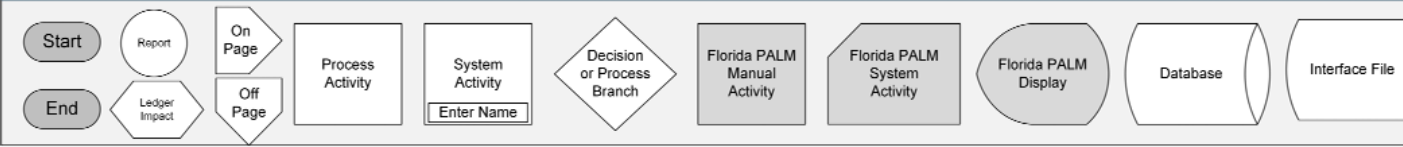




General Ledger Module

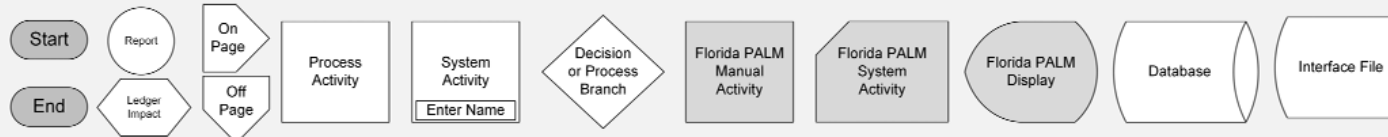
DFS GL Cash Processor





This subprocess has been removed. Interunit transactions will be handled through delivered processes as reference in the following subprocesses:

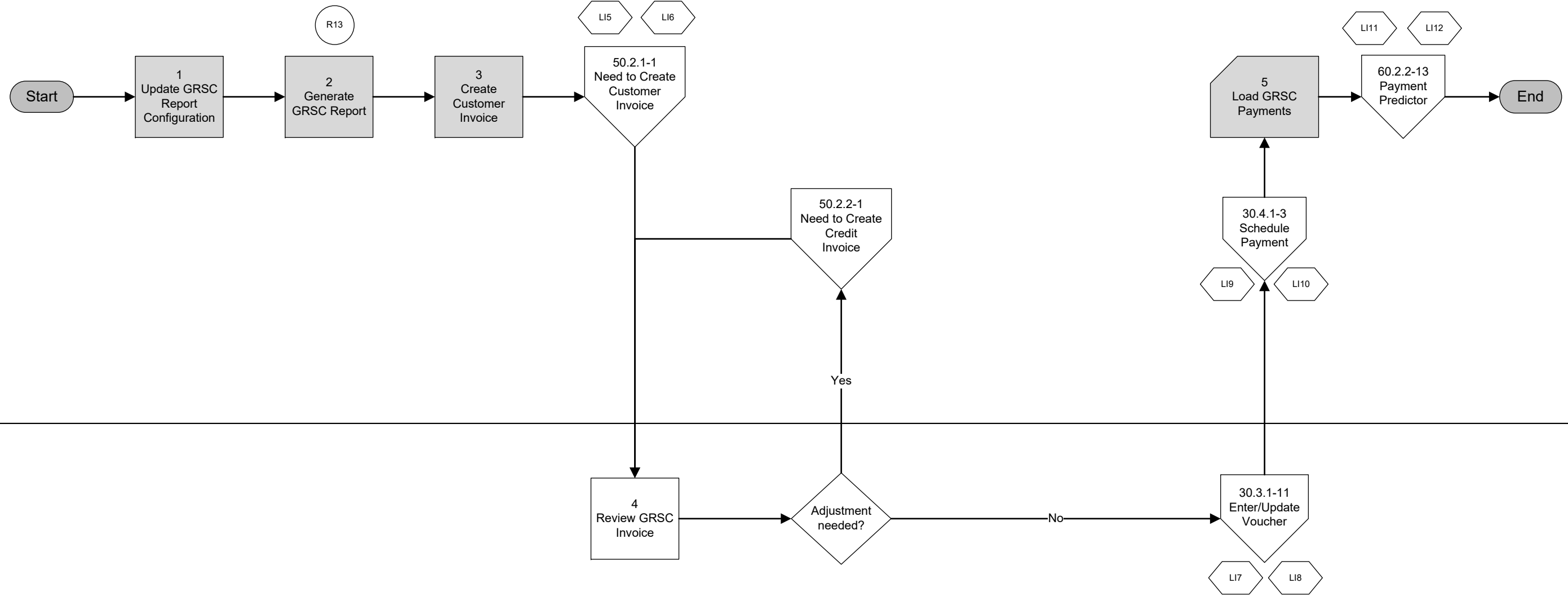
- 10.2.1 Create and Approve Journals
- 30.3.1 Process Vouchers
- 50.2.1 Customer Billing
- 60.2.1 Direct Journal Deposits
- 60.2.2 AR Deposits

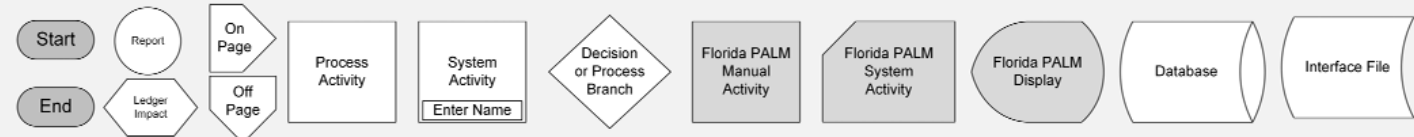


Billing Module

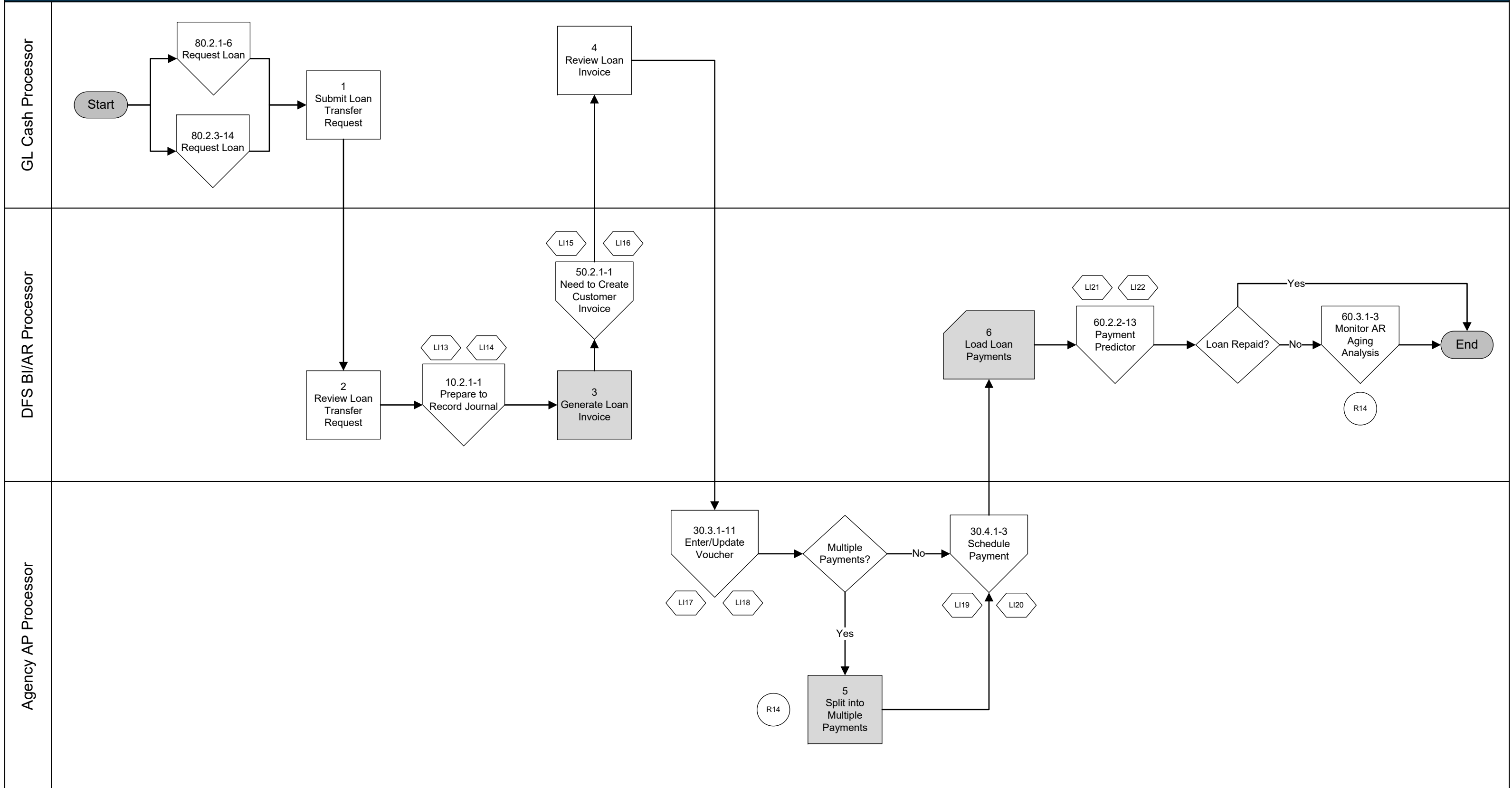
DFS BI/AR Processor

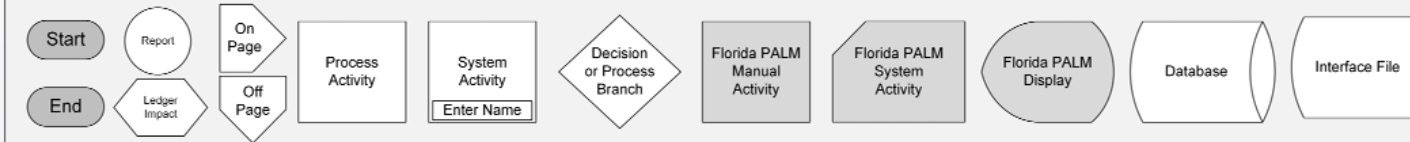
Agency AP Processor



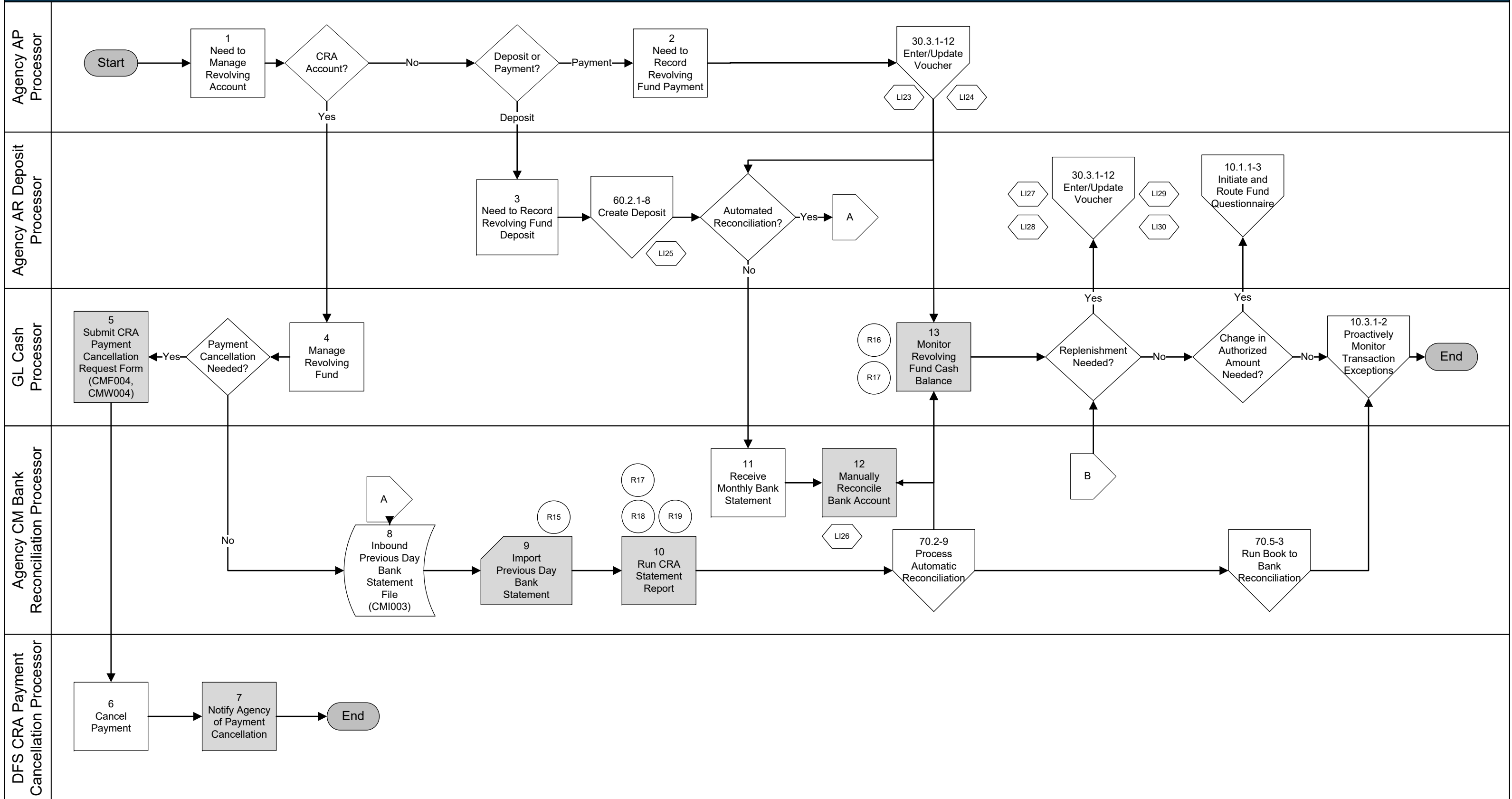


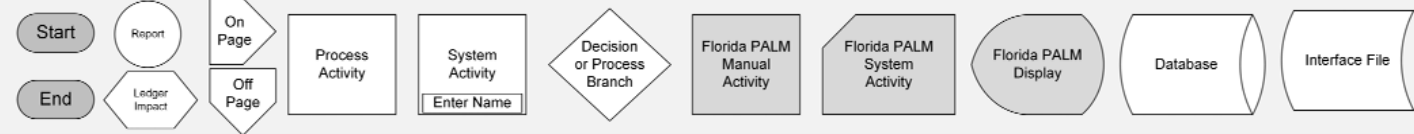
Billing Module





Cash Management Module





Grant Management Module

Agency GM CMIA Processor

DFS GM CMIA Processor

