

Inter/IntraUnit:

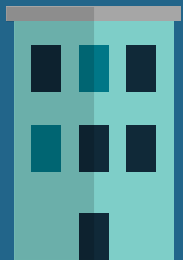
The Florida PALM module that supports recording the movement or adjustment of financial resources between agencies or within an agency (e.g., across funds).

InterUnit

Definition: InterUnit refers to the movement between two agencies.

Example: A state agency may pay another state agency for services performed.

Business Unit
43000



Business Unit
76000



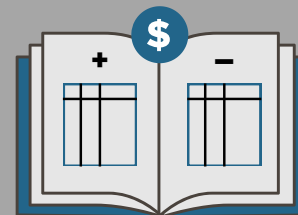
VS

IntraUnit

Definition: IntraUnit refers to the movement within the agency.

Example: An expenditure is reclassified to another fund within the same agency.

Business Unit
43000
Fund A



Business Unit
43000
Fund B

